







Rhode Island Ocean Special Area Management Plan (SAMP)

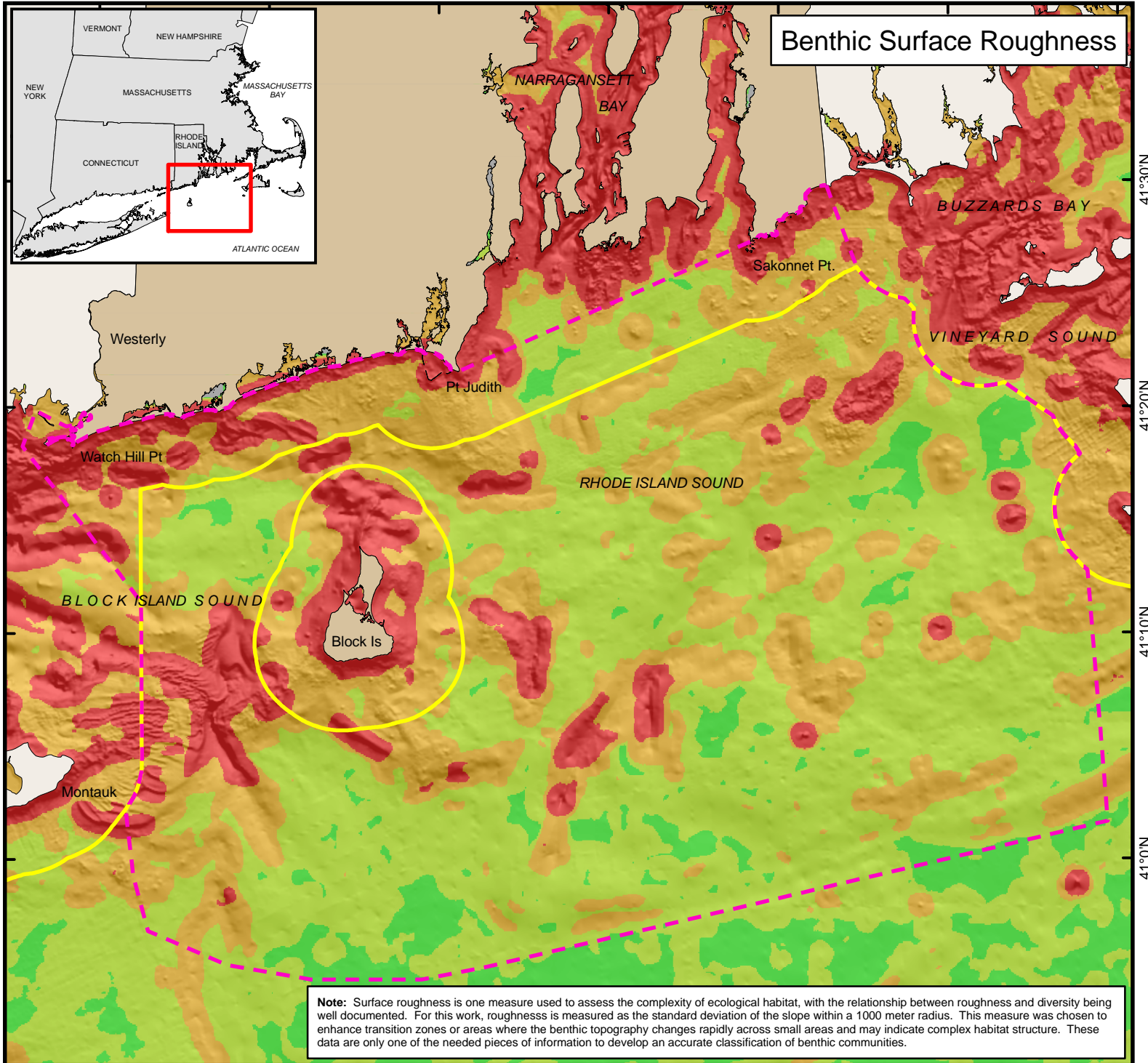
71°50'W 71°40'W 71°30'W 71°20'W 71°10'W 71°0'W 70°50'W

Map Key

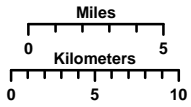
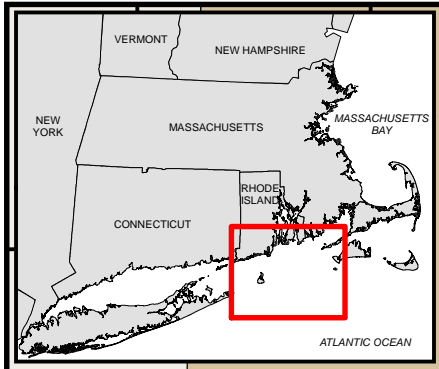
-  OceanSAMP Study Area
-  State/Federal Waters Separation

Surface Roughness

-  Lowest Quartile
-  (Unlabeled)
-  (Unlabeled)
-  Highest Quartile



Benthic Surface Roughness



Coordinate System:
 Projection: RI Stateplane
 Units: Feet
 FIPS Zone: 3800
 Datum: NAD83

For Project Background Information:
<http://seagrant.gso.uri.edu/oceansamp>

For Project Map and Data Products:
http://www.narrbay.org/d_projects/oceansamp



Note: Surface roughness is one measure used to assess the complexity of ecological habitat, with the relationship between roughness and diversity being well documented. For this work, roughness is measured as the standard deviation of the slope within a 1000 meter radius. This measure was chosen to enhance transition zones or areas where the benthic topography changes rapidly across small areas and may indicate complex habitat structure. These data are only one of the needed pieces of information to develop an accurate classification of benthic communities.

41°30'N
41°20'N
41°10'N
41°0'N